



# USMI PRODUCTS BROCHURE



**9M Rigid Inflatable Boat**



**10M Special Operations Craft Riverine**



**11M Naval Special Warfare Rigid Inflatable Boat**



**13M High Speed Interceptor Craft**



**27M MKV Patrol Boat**



**Logistics and Support Services**

**NOTE: This brochure does not contain information controlled under the ITAR or EAR.**

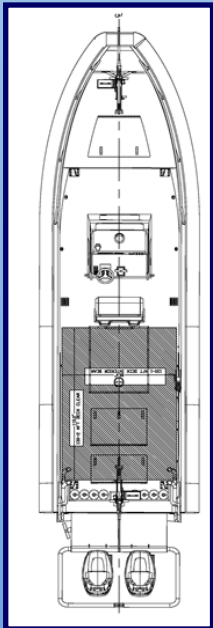
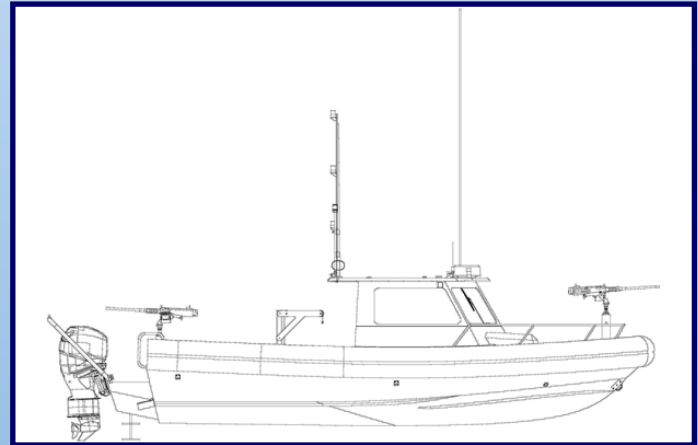




# 9M RIGID INFLATABLE BOAT

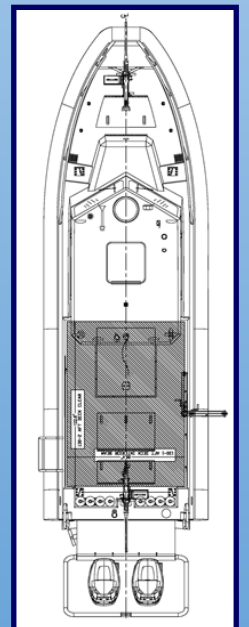
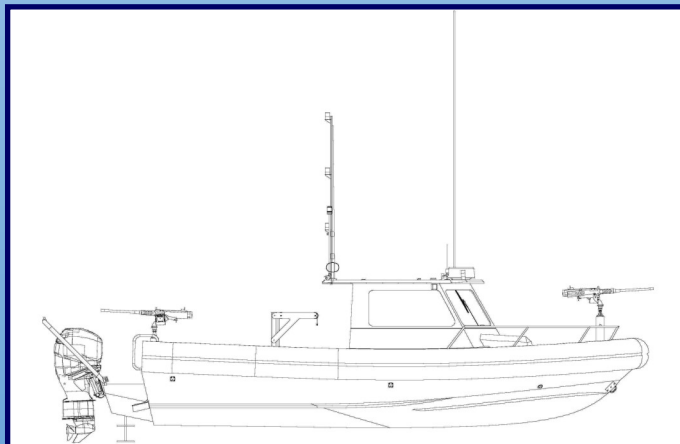
**US DOD PROGRAM OF RECORD**

**NOTE: This brochure does not contain information controlled under the ITAR or EAR.**



**9M Open Center Console**

**9M Cabin**



# 9M RIGID INFLATABLE BOAT

USMI designed and is producing two variants of a 9M Rigid Inflatable Boat (RIB), a Cabin and an Open Center console variant. These composite RIBS can be used for missions such as harbor patrol, passenger transport, diving operations, casualty evacuation and unmanned system operations. Brief characteristics of the craft are provided below.

<b>LENGTH OVERALL (LOA)</b>	<b>11 m    36 ft 7 in</b>
<b>HULL LENGTH</b>	<b>9 m    29 ft 4in</b>
<b>BEAM (INFLATED TUBE) (DEFLATED TUBE)</b>	<b>3 m    10 ft 2.9 m    9 ft 7 in</b>
<b>DRAFT AT FULL LOAD</b>	<b>0.57 m   1 ft 9 in - OCC / 0.60 m 2 ft - Cabin</b>
<b>FULL LOAD WEIGHT</b>	<b>6,622 kg 14,600 lbs - OCC 6,532 kg 14,400 lbs - Cabin</b>
<b>HULL CONSTRUCTION</b>	<b>FRP, Using Infusion Lamination Process</b>
<b>PROPULSION</b>	<b>Twin Mercury Verado 250 hp 4-Stroke Outboard Gasoline Engines With Joystick Piloting For Outboards</b>
<b>GENERATOR</b>	<b>6.5 Kw Westerbeke 6.5mcg</b>
<b>SPEED</b>	<b>39+ Knot Sprint.; 30+ Knots Cruise</b>
<b>CREW/PAX</b>	<b>Up To 7 Total</b>
<b>PAYLOAD</b>	<b>1,361 kg   3,000 lbs – OCC 907 kg    2,000 lbs—Cabin</b>
<b>ARMAMENT</b>	<b>.50 Caliber Machine Gun Forward And Aft</b>
<b>TRANSPORTABILITY</b>	<b>Air Transportable; Single Point Lift For Ship Launch/ Recovery; Boatmaster Trailer</b>
<b>LOGISTICS AND SUPPORT</b>	<b>Spare Parts, Familiarization Training, Tiger Team deployed within 48 hours for service, repairs and support (CONUS and OCONUS)</b>

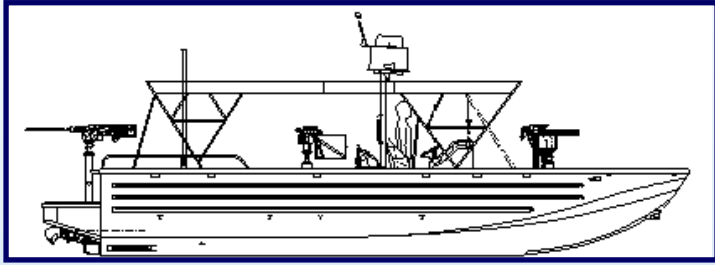




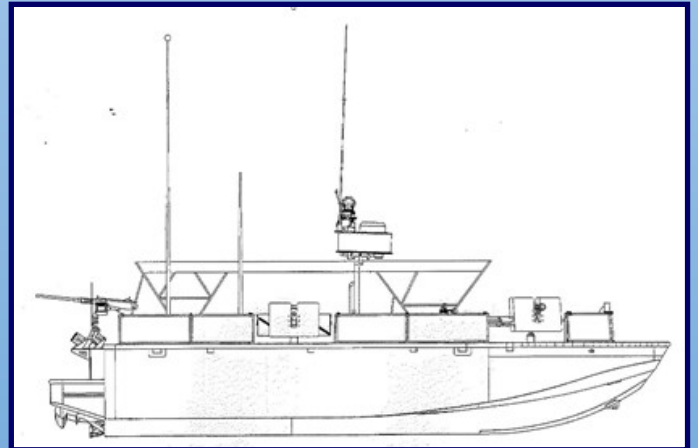
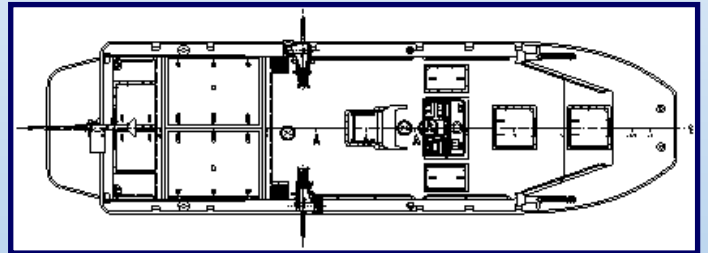
# 10M RIVERINE CRAFT

**USA DOD PROGRAM OF RECORD**

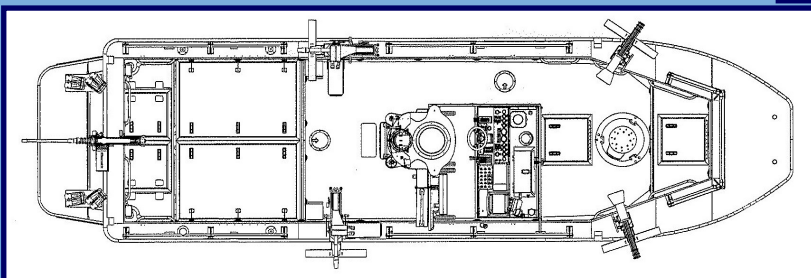
**NOTE: This brochure does not contain information controlled under the ITAR or EAR.**



**SPECIAL OPERATIONS  
CRAFT-RIVERINE (SOC-R)**



**RIVERINE ASSAULT  
BOAT (RAB)**





# 10 METER RIVERINE CRAFT

USMI designed and produced two variants of aluminum riverine craft, the 10M Special Operations Craft-Riverine (SOC-R) for US Special Operations Command and the 10M Riverine Assault Boat (RAB) for Navy Expeditionary Combat Command. As a riverine patrol craft, with missions of interdiction, insertion and extraction, both the SOC-R and RAB are highly maneuverable, providing the crew with the capabilities of a 180 degree turn or a full stop from full speed in 1 1/2 boat lengths. The low draft requirement and craft configuration allow for ease of crew and passenger insertion/extraction. Brief characteristics are provided below.

	<b>SOCR</b>	<b>RAB</b>
<b>LENGTH OVERALL</b>	10m    33 ft.	10m    33 ft.
<b>BEAM OVERALL</b>	2.7m    9 ft.	2.7m    9 ft.
<b>DRAFT</b>	0.6m    2 ft.	0.6m    2 ft.
<b>POWER</b>	Twin Yanmar 6LY2A-STP Diesels; 440 HP @ 3300 RPM; Twin Hamilton HJ292 Waterjets, w/ZF 220 Marine Drives	Twin Yanmar 6LY2A-STP Diesels; 440 HP @ 3300 RPM; Twin Hamilton HJ292 Waterjets, w/ZF 220 Marine Drives 1.237:1
<b>HULL STRUCTURE</b>	Aluminum with Composite Console/Flooring	Aluminum with Composite Console/Flooring
<b>FUEL CAPACITY</b>	194 US Gallons – Bladders	250 US Gallons – Integral Tank
<b>SPEED, MAX (FULL LOAD)</b>	40+ Knots	40+ Knots
<b>CREW</b>	5 Crew/8 Pax	6 Crew
<b>BALLISTIC PROTECTION</b>	Per Customer's Specifications	Per Customer's Specification
<b>TRANSPORTABILITY</b>	Air Transportable Trailer	Air Transportable Trailer
<b>LOGISTICS (AFTER DELIVERY SUPPORT)</b>	Spare Parts Packages; Familiarization and Advanced Troubleshooting Training (CONUS and OCONUS); Tiger Team deployed within 48 hours for service, repair, and support (CONUS and OCONUS)	

# ***PHOTO CREDITS***



**US Navy photo by Mass Communication Specialist 1st Class Elisandro T. Diaz**



**Photos courtesy of US Navy**



**US Navy photo by Mass Communication Specialist 2nd Class RJ Stratchko**



**US Navy Photo by Mass Communication Specialist 2nd Class Jimmy C. Pan**



**US Navy Photo by Mass Communication Specialist Kathryn Whittenberger**



**Photo courtesy of US Navy SWCC**



**Photos courtesy of Special Boat Team 22**





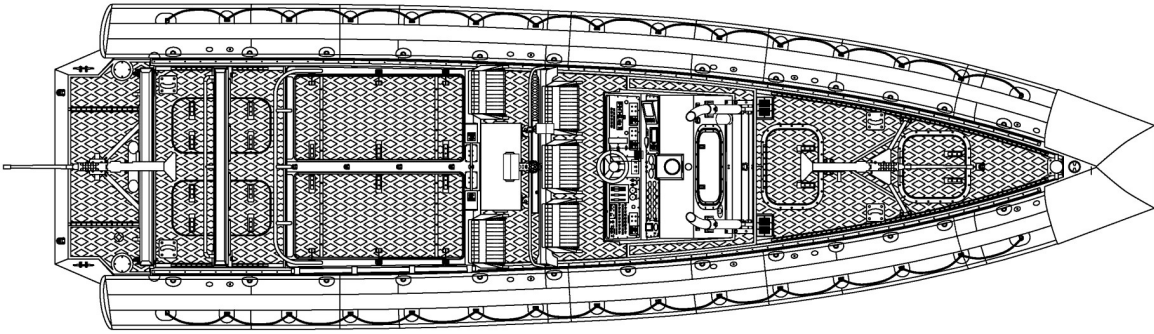
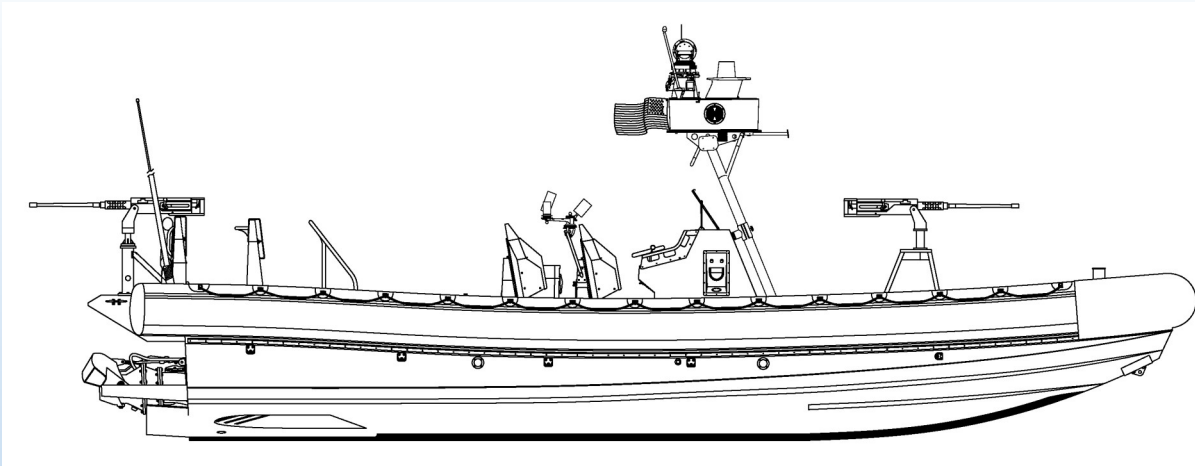
# UNITED STATES MARINE, INC. 11M NSWRIB



**USA DOD PROGRAM OF RECORD**

NOTE: This brochure does not contain information controlled under the ITAR or EAR.





*Currently in service in USA and other countries worldwide.*



**AIR TRANSPORTABLE - AIR DEPLOYABLE**



# 11 METER NAVAL SPECIAL WARFARE RIB (NSWRIB)

## Coastal Tactical Vessel

### GENERAL MISSION

The United States Marine, Inc. 11 Meter NSW RIB is designed to operate in various climate and adverse sea conditions to fulfill the following duties:

- Short range insertion and extraction of SOF
- SOF coastal resupply
- Anti piracy in coastal and international waters
- Surveillance
- Patrol/Escort Craft
- Search and Rescue
- Anti smuggling

The 11M NSW RIB Kevlar composite hull is designed for a top speed of 44 knots (+/- 2 knots) at sea state 0 under full load, and will continue to function in sea state 5, with strong emphasis on sea keeping.

### GENERAL PARTICULARS (APPROX.)

Length—Overall	36 ft.	11.0 m
Beam—Overall (Inflated)	10 ft. 7 in.	3.2 m
(Deflated)	8 ft. 9 in.	2.6 m
Maximum Draft	2 ft. 11 in.	0.9 m
Operating Draft	1 ft. 8 in.	0.5 m
Displacement	18,000 lbs.	8,164 kg
Fuel	187 gal.	681 L

### CAPACITIES

Crew/Passengers Up to 13 total

### PERFORMANCE

Max. Speed (Full Load); SS0 44+ Kts  
Cruising speed (Full Load) 30+ Kts  
Range 190 nm. @ Cruising Speed with 10% reserve

### MAJOR MACHINERY

Twin 3126 Caterpillar 470 hp or Marine Diesel Engines with ZF 301 Marine Gears, and Kongsberg FF280 waterjets. Customer defined propulsion packages available.

### ARMAMENT MOUNTS

- (1) M2A2 QCB, .50 cal Machine Gun 1 207 lbs.
- (2) MK43 Mod 1, 7.62mm Machine Gun 98 lbs
- (1) HK GMG, 40mm Grenade Machine Gun 145 lbs.

### NAVIGATION AND SYSTEMS

Customer specified previous installations, including:

- Radar Furuno TZ Touch Radar System
- Raymarine E180 display
- Raystar 125
- PG700 Compensated Heading Sensor
- DFF1 Digital Black Box Echo Sounder;
- Raymarine DSM 300
- Magnetic Compass Ritchie SS-5000
- FA30 Black Box AIS Receiver
- KVH100 (Raymarine system)
- Internal Communication AN/VIC-3 (owner furnished); David Clark 9500

### COMMUNICATION SYSTEMS

While the tactical radios are customer furnished, USMI provides the following antennas to accommodate various communication suites:

- HF Antenna Shakespeare 4245
- LOS/UHF Antenna Trivec-Avant AV201-9
- SATCOM Antenna Trivec-Avant AV2075-9
- Tactical VHF Antenna Shakespeare 3512
- Other Standard Horizon GX5000s MARBAND VHF

### LOGISTICS AND SUPPORT

- Spare Parts, including Parts Packages
- Maintenance and Repair, including up to Service Life Extension Program (SLEP)
- Training (CONUS and OCONUS)
- Tiger Teams deployed within 48 hours to provide service and support worldwide

## ***PHOTO CREDITS***



**Photos courtesy of Philippine Navy Special Operations Group.**



**US Marine Corps Photo by Staff Sgt Connor Hancock**



**Photo courtesy of Danish Navy—NATO Photograph**



**Photos courtesy of Australian Department of Defence**



**US Marine Corps Photo by Cpl. Matthew Teutsch**



**US Navy photo by MC1 David McKee**





# **13M HIGH SPEED INTERCEPTOR CRAFT (HSIC)**

**NOTE: This brochure does not contain information controlled under the ITAR or EAR.**



### **Medium Range Maritime Interceptor Craft**

- **Operates in Medium to High Threat Environments**
- **Insertion and Extraction of Special Operations Forces**
- **Coast Patrol Operations**
- **Command and Control Platform**
- **Clandestine Surveillance Platform**
- **Automated Weapons Platform**
- **ISR Platform Capable**
- **High Speed Interception and Response to Emergency Situations**
- **Search and Rescue**





# 13M HIGH SPEED INTERCEPTOR CRAFT

The 13 Meter High Speed Interceptor Craft (HSIC) is designed for a top speed of 55+ knots in Sea State 1-2 and 40+ knots in sea state 3, with strong emphasis on sea keeping. The vessel is built in accordance with the American Bureau of Shipping (ABS) High Speed Naval Craft (HSNC) Guide. Brief characteristics of the craft are provided below.

<b>LENGTH OVERALL</b>	13 m 43 ft.
<b>BEAM OVERALL</b>	2.7 m 8 ft 11 in
<b>CONSTRUCTION</b>	Deep Vee Monohull; High Tech Composites
<b>PROPULSION OPTIONS (DIESEL)</b>	Twin Cummins QSC 8.3 (600 hp); Twin Cummins QSB 6.7 (550 hp); Twin FPT N67 (570 hp)
<b>SPEED</b>	55+ Knots (Max); 40 Knots (Cruise)
<b>PAYLOAD</b>	7,200 Lbs (Including Fuel)
<b>RANGE</b>	350 Nautical Miles
<b>FUEL CAPACITY</b>	1250 L 330 gal
<b>CREW/PASSENGERS</b>	Total of Twelve Shock Mitigating Seats*
<b>ELECTRICAL</b>	Standard 24 Volt Dc Electrical System
<b>NAVIGATION</b>	Radar, GPS, Depth Finder, Magnetic Compass, Flux Gate Compass, Speed Log, Autopilot and Wind Speed (Models Dependent On Customer Requirements)
<b>COMMUNICATIONS</b>	Specified By Customer Requirements
<b>WEAPONS</b>	Capable of Integrating Customer Furnished .50 Caliber Machine Gun and (2) 7.62 mm Machine Guns Remote Operated Small Arms Mount (ROSAM)
<b>TRAILER</b>	Aluminum or Galvanized
<b>OPTIONS</b>	Enclosed Cockpit With Air Conditioning Ballistic Protection Shore-Based Spares Familiarization Training (CONUS Or OCONUS)
<b>LOGISTICS AND SUPPORT</b>	Spare Parts, Training (CONUS and OCONUS), Tiger Teams deployed within 48 hours to accomplish repairs worldwide.

\* Quantity of 12 Shock Mitigating Seats Not Available With All Engine Packages

## ***PHOTO CREDITS***



Photos courtesy of Copenhagen Group A/S—Denmark





# 27M MKV-PATROL BOATS (MKV-PB)

USA DOD PROGRAM OF RECORD

NOTE: This brochure does not contain information controlled under the ITAR or EAR.



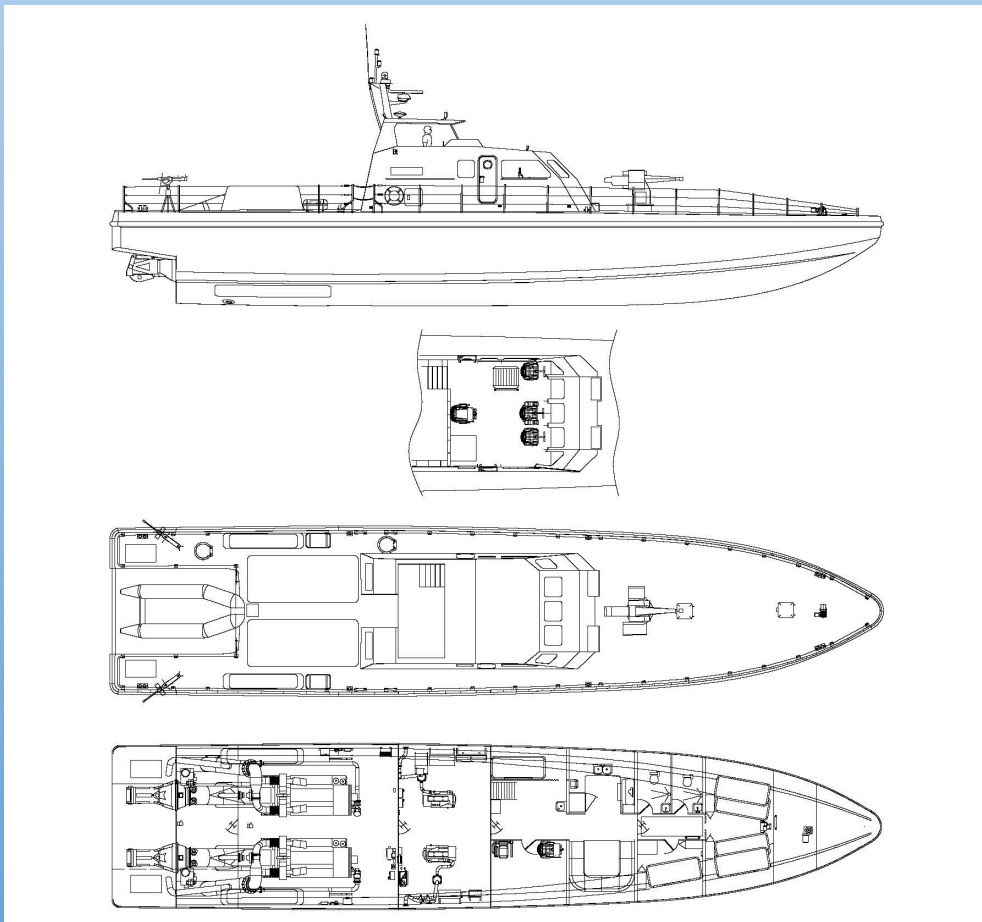
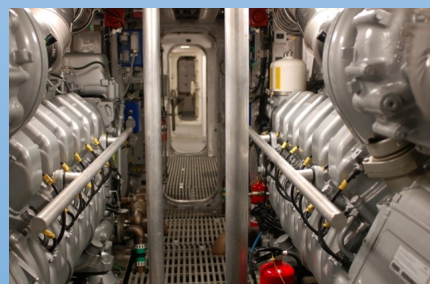
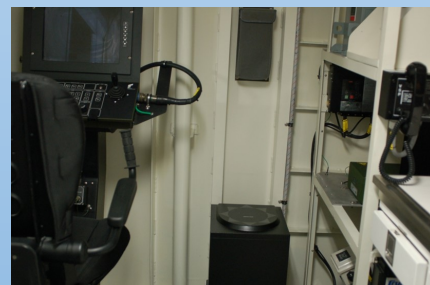
27 M MKV-Patrol Boat Composite



27 M MKV-Patrol Boat

### Multi-Role Patrol Vessel

- Coastal Surveillance
- High Speed Interception and Response to Emergency Situations
- Anti-Piracy in Coastal and International Waters
- Anti-Terrorist Protection of Coastal and Offshore Installations
- Security Assistance
- Patrol/Escort Craft
- Search and Rescue
- Counter-Drug and Anti-Smuggling
- Pollution Control





# 27M MKV-PATROL BOATS

The USMI 27M MKV Patrol Boat is designed and built in either aluminum (MKV-PB) or composite (MKV-PB(C)) hulls to operate in various climate and sea state conditions.

	MKV-PB (C)	MKV-PB
<b>MATERIAL</b>	Kevlar Composite	Aluminum
<b>LENGTH, OVERALL</b>	27 m 90 ft	27 m 90 ft
<b>BEAM</b>	5.5 m 18 ft	6.1 m 20 ft
<b>DEPTH</b>	3.1 m 10 ft	3.2 m 10 ft 5 in
<b>DRAFT, FULL LOAD</b>	1.5 m 5 ft	1.6 m 5 ft
<b>DISPLACEMENT</b>	67.34 LT 150,849 lbs	74.00 LT 165,000 lbs
<b>PROPULSION</b>	Twin MTU 12V-4000 5,470 hp with Kamewa/Rolls Royce 56sii; 56 cm	Two MTU 12V-4000; 5,470 hp with Kamewa/Rolls Royce 63sii; 63cm
<b>SPEED</b>	45 + Knots Max; 35+ Knots Cruise	45 + Knots; 35+ Knots Cruise
<b>RANGE</b>	500 Nautical Miles	400 Nautical Miles
<b>ENDURANCE</b>	5 Days	48 Hours
<b>ACCOMMODATIONS</b>	Quarters & Bunks for 10 Crew and 2 Officer Stateroom (Air Conditioned)	Quarters & Bunks for 2 Officers, 1 Cook, 8 Crew (HVAC)
	Shock Mitigating Seats for Engineer, Helmsman and Navigator	Shock Mitigating Seats for OIC, Engineer, Helmsman, Navigator, Gunner & Radio Operator
	Full Galley	Full Galley
	Mess Area	Mess Area
<b>MISSION</b>	Coastal Patrol and High-Speed Interceptor With Extended	Coastal Patrol & High-Speed Interceptor
<b>OPTIONAL CAPABILITIES</b>	Ballistic Protection Mounts for Customer Furnished Weapons, including MLG-27mm Remotely Operated Machine Gun, and Two .50 Caliber Machine Guns Surveillance System such as Forward Looking Infra-Red (FLIR)	
<b>LOGISTICS AND SUPPORT</b>	Spare Parts, Training (CONUS and OCONUS), Tiger Team Deployed within 48 hours for support worldwide	



## ***PHOTO CREDITS***



**Photo courtesy of Royal Oman Police Coast Guard**



**Photo courtesy of Kuwait Naval Forces**





# LOGISTICS AND SERVICE SUPPORT

**NOTE:** This brochure does not contain information controlled under the ITAR or EAR.

## USMI services include:

Post and Pre-Deployment Grooms  
Scheduled Preventative Maintenance Tasks  
Service Life Extension Programs  
Emergent Repairs, as needed  
Parts supply for USSOCOM and US Navy Craft

Training (CONUS and OCONUS)  
Crew Familiarization  
Systems and Electrical  
Advanced Electrical and Troubleshooting  
Tiger Teams Deployed within 48 hours worldwide

The response time for emergency repairs is consistently within hours of the incident, this includes international incidents. For emergency repairs, USMI dispatches assistance teams where needed. USMI assistance teams are known as Tiger Teams. These teams are made up of USMI employees who are experts in their field. USMI has provided Tiger Teams to various customers, both US and International, for immediate response to demand signal from deployed assets, craft reactivation, communication systems integration, craft maintenance and repair, incorporation of upgrades through Engineering Change Proposals (ECPs) and training. Training provided by USMI includes Advanced Electrical, Craft and Auxiliary Systems Familiarization and Basic Troubleshooting, Advanced Systems and Electrical Troubleshooting, and underway training, including Boat Handling and Craft Casualty.



US Army Photo by Spc Terese Prots



USMC Photo by Cpl Matthew Teutsch



US Navy Photo by MC2 Eric Coffey

## USMI currently designs, builds and/or maintains every boat in the USSOCOM



US Navy Photo by MC1 Sean Furey



Photo permission provided by USSOCOM

*USMI provides maintenance and sustainment for these USSOCOM craft*




USMI is a two-time winner of the David Packard award, presented by the United States Department of Defense, for excellence in acquisition. The award was presented to USMI for a logistical support strategy, which was ground breaking at the time. This strategy is now the standard for all maritime platforms at United States Special Operations Command.

USMI maintenance, repair and modifications for these craft and other DoD craft are carried out with our partners on the East and West Coast.

USMI has a full-service Sales Dept. for parts supplies for USMI produced craft, as well as non-USMI craft under DoD sustainment awards, including USSOCOM, US Navy and FMS.

USMI's Chesapeake, VA facility provides the maintenance and repairs to these craft on the East Coast. USMI is also able to draw upon services from Nielsen Beaumont located on the West Coast, and both Beach Marine and Advanced Machine and Tooling located on the East Coast, to assist in repairs and maintenance to the CCA, CCM and CCH. These facilities also provide services, where required, for other DoD maintenance and repair contracts.



-  United States Marine, Inc. Main Facility, Gulfport, MS and Maintenance and Repair, Chesapeake, VA
-  East Coast Repair and Maintenance Facilities
-  West Coast Repair and Maintenance Facilities



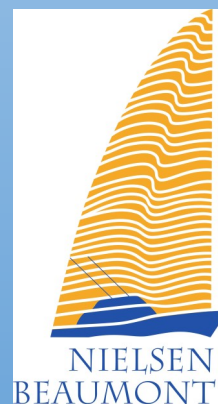
Portsmouth, VA  
[www.beachmarine.com](http://www.beachmarine.com)



Virginia Beach, VA  
[www.sdvanced-machine.com](http://www.sdvanced-machine.com)



Maintenance & Repair  
Chesapeake VA  
CONUS—OCONUS  
Gulfport, MS  
[www.usmi.com](http://www.usmi.com)



San Diego, CA  
[www.nielsenbeaumont.com](http://www.nielsenbeaumont.com)